



LINCOLN[®]
ELECTRIC



PORTABLE WELDING CARRIAGES

for MIG/MAG welding operations
in all positions

PORTABLE WELDING CARRIAGES

Battery powered
Rapid implementation
Light and robust
Aesthetic
Welding
Easy to use
Productivity gain

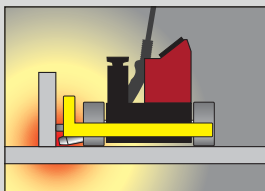
WELDYCAR

Magnetic Portable Welding Carriage
MIG/MAG welding in all positions

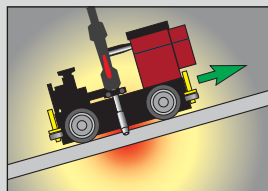
Application domains



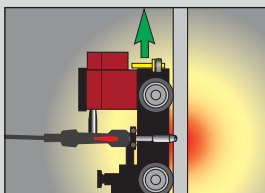
Welding positions



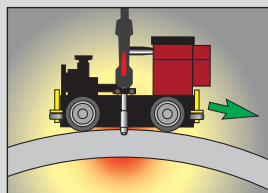
Flat welding.



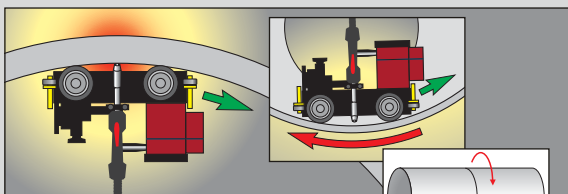
Inclined plane.



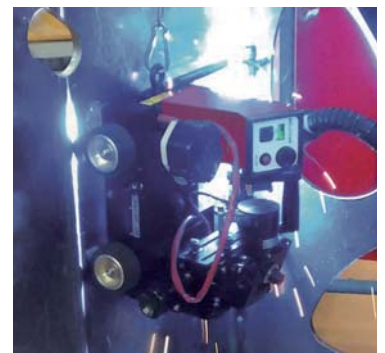
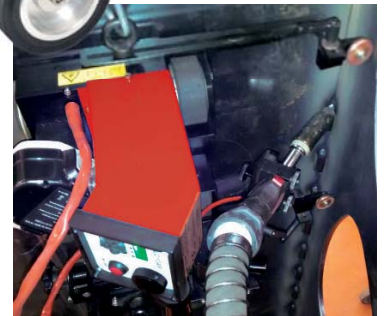
Vertical welding.



Shell exterior with minimum diameter of 2000 mm.



Shell interior with minimum diameter of 3000 mm.



Options

- Magnetic railway
- Double torch holder
- Tilting torch holder
- Linear oscillator
- Pendular oscillator
- Arc protection
- Aluminium wheels

Type	WELDYCAR	WELDYCAR PRO
Weight	12 Kg	
Power supply	14 V battery	
Autonomy	without oscillator	6 hours
	with oscillator	4 hours
Programming device	No	Yes
Cycle	Continuous welding	Intermittent welding
Travel speed	5 to 140 cm/min	
Magnetic force	25 Kg	
Guiding	Crabbing support rollers	
	Option	On magnetic railway
Torch support	Universal with quick attach	
Overall dimension (L x W x h)	250 x 300 x 260 mm	



WELDYRAIL

Railway Portable Welding Carriage
MIG/MAG welding in all positions

Options

- Magnetic railway
- Pneumatic suction cup railway
- Linear oscillator

Type	WELDYRAIL	WELDYRAIL-OSCIL
Weight	7 Kg	9.5 Kg
Power supply	14 V battery	
Autonomy	5 hours	2 hours
Oscillation	No	2 to 56 mm
Travel speed	5 to 80 cm/min	
Guiding	Magnetic or pneumatic railway (Ø mini 1 m)	
Torch support	Universal with quick attach	
Overall dimension [L x W x h]	270 x 220 x 230 mm	

WELDYSTIFFENER

Portable Welding Carriage
2 x MIG/MAG welding



Type	WELDYSTIFFENER
Weight	16 Kg
Power supply	14V battery
Autonomy	6 hours
Travel speed	15 to 180 cm/min
Welding application	Flat on Holland profil height: 60 to 160 mm or 120 to 320 mm
Torch support	Universal with quick attach
Overall dimension [L x W x h]	500 x 500 x 500 mm

WELDYPOCKET

Small Portable Welding
Carriage MIG/MAG welding



Type	WELDYPOCKET
Weight	5 Kg
Power supply	9.6V battery
Autonomy	5 hours
Travel speed	15 to 120 cm/min
Magnetic force	15 Kg
Guiding	Crabbing support rollers
Torch support	Universal with quick attach
Welding position	Flat to 45° climb
Overall dimension [L x W x h]	240 x 140 x 220 mm

BEING PRESENT LOCALLY MAKES US MORE AWARE GLOBALLY



2.6 BILLION USD REVENUE **160** ACTIVE IN 160 COUNTRIES WORLDWIDE **11 000** EMPLOYEES WORLDWIDE **120** YEARS OF EXPERIENCE

CUSTOMER ASSISTANCE POLICY

The business of The Lincoln Electric Company® is manufacturing and selling high quality welding equipment, consumables, and cutting equipment. Our challenge is to meet the needs of our customers and to exceed their expectations. On occasion, purchasers may ask Lincoln Electric for information or advice about their use of our products. Our employees respond to inquiries to the best of their ability based on information provided to them by the customers and the knowledge they may have concerning the application. Our employees, however, are not in a position to verify the information provided or to evaluate the engineering requirements for the particular weldment. Accordingly, Lincoln Electric does not warrant or guarantee or assume any liability with respect to such information or advice. Moreover, the provision of such information or advice does not create, expand, or alter any warranty on our products. Any express or implied warranty that might arise from the information or advice, including any implied warranty of merchantability or any warranty of fitness for any customers' particular purpose is specifically disclaimed.

Lincoln Electric is a responsive manufacturer, but the selection and use of specific products sold by Lincoln Electric is solely within the control of, and remains the sole responsibility of the customer. Many variables beyond the control of Lincoln Electric affect the results obtained in applying these types of fabrication methods and service requirements.

Subject to Change – This information is accurate to the best of our knowledge at the time of printing. Please refer to www.lincolnelectric.eu for any updated information.



www.lincolnelectriceurope.com

